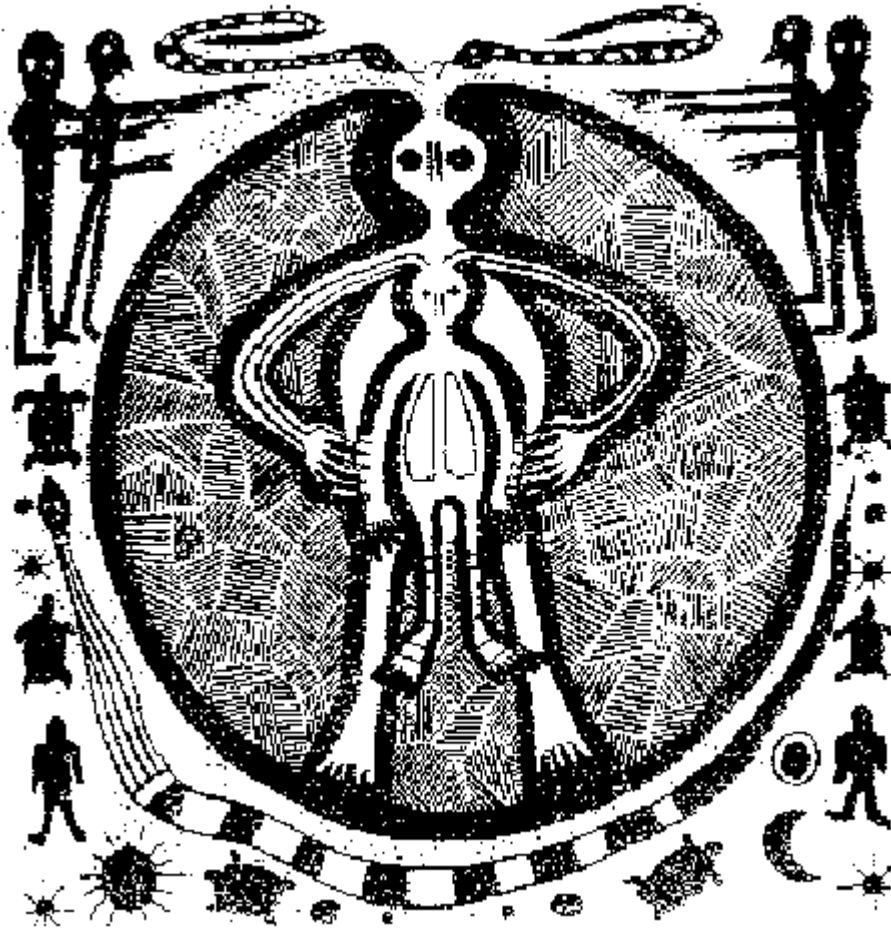


Ancient Astronauts¹

Ancient Astronauts



The term 'Ancient Astronauts' generally refers to extraterrestrials who came to Earth and were in some way responsible for seeding the human race.

¹ C:\My Documents\SCHOOLofLocalChurch\Lessons\30TheNephilim\Articles\AncientAstronauts01.doc

The most notorious proponent of this idea is Erich von Daniken, author of several popular books on the subject. His best-selling *Chariots of the Gods*, published in 1968, argued that spacecraft landed long before modern humanity peopled the Earth. The ancient visitors carried out breeding experiments and produced a creature intelligent enough to have the rules of society imparted to it. These new beings invented agriculture and became the first artists, then created their own warlike civilizations. Sodom and Gomorrah were destroyed by an atomic bomb! The Ark of the Covenant was an electrified transmitter that allowed Moses to communicate with the astronauts! Von Daniken even claims that ancient astronauts - complete with space helmets - were carved on stelae at the Mayan city of Copan!

All of the ancient creational myths speak of Gods and Goddesses who came to Earth in some sort of magical scenario - or riding in chariots of fire - and creating a race called Humans. Most of these myths refer to their primary God as a *Sun God* meaning from the Light. In Egypt this God was called Ra, Re, Ray of Light.

In India the chariots were called Vimanas.



Egyptian hieroglyphs depict the same images carved in stone.

Creational legends are a global phenomenon. Records of the belief systems of ancient astronauts coming to Earth can be found on Rock Art ~ Ancient Sumerian clay tablets and cylinder seals, and in the Bible.

The Bible speaks of the Hebrew word 'Elohim', meaning 'God' or 'those who came from the sky'. Genesis Chapter 1:26, states 'And God said, let us make man in our own image, after our likeness'. This quote still uses the plural 'us' rather than the singular 'I', suggesting that God was not a single entity, as many of us have been brought up and conditioned to believe.

The Sumerian Epic of Gilgamesh is filled with mentions of fiery chariots and people being taken up to the garden of God. The Epic also contains a whole host of parallels to our very own old Testament. For instance, it mentions a great flood, and relates a story very close to that of Moses being cast downstream as a child. The Sumerians also had an Eden, known as Dilmun, which is described in the Epic of Enki and Ninhursag - the creation stories of both texts bear striking resemblances.

Years ago when I connected with a Reptilian race - this was long before I worked with Zecharia Sitchin and researched Nibiru and the Sumerians - I channeled with an alien who called himself Dilmon.



Nibiruan Gods on Earth

Dilmon told me tales about a civilization that was destroyed - its inhabitants taking off in a planetoid named Nibiru and coming to Earth. His energy was warrior like - sort of like the Klingons on Star Trek. He was six hundred years old as we measure time. His people were conquerors. He spoke about conquering planets for gold and riches. He did say he would return one day. It was years later that I would discover that I was getting my information - making my connection with the grid system - matrix - akashic records - hall of records - that create our reality.



Sumerian God - Reptilian Based



The Sumerian cuneiform deciphering skills of Zecharia Sitchin, a linguist in command of many ancient languages has set the scientific world on its ear with his astounding interpretations of ancient writings. In 1976, Sitchin's first book, *The Twelfth Planet - Planet 'X'* - began an odyssey that has literally transformed the field of ancient history.

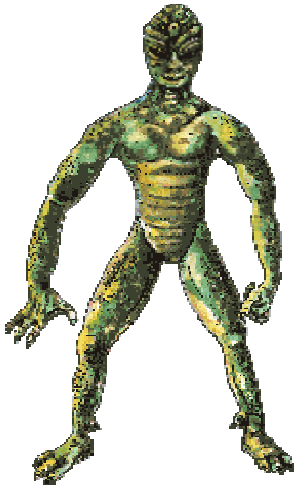
Sitchin says this planet is called Nibiru. This planet, unlike the other planets in our solar system, has an elliptical orbit and moves clockwise rather than counterclockwise.

Nibiru's orbit passes through our solar system only once every 3,600 years, which is equal to one Nibiruan year.

This controversial theory is based on Sitchin's interpretation of ancient Sumerian texts, with its origin in the Bible, in the book of Genesis. Sitchin has spent decades as an archeologist and historian in the Middle East, researching ancient writings from the Sumerian civilization into a 5-part paperback series, *The Earth Chronicles*, documenting the Nibiruan interaction on Earth in ancient times.

As the story goes . . .

Nibiru is inhabited by the Anunnaki - Nefilim - Giants of the Bible - Those Who From Heaven To Earth Came. They are supposedly a Reptilian Race.



The Dogon Tribe of Africa also have a creational myth of a race of Reptoid aliens who came to Earth from Sirius.

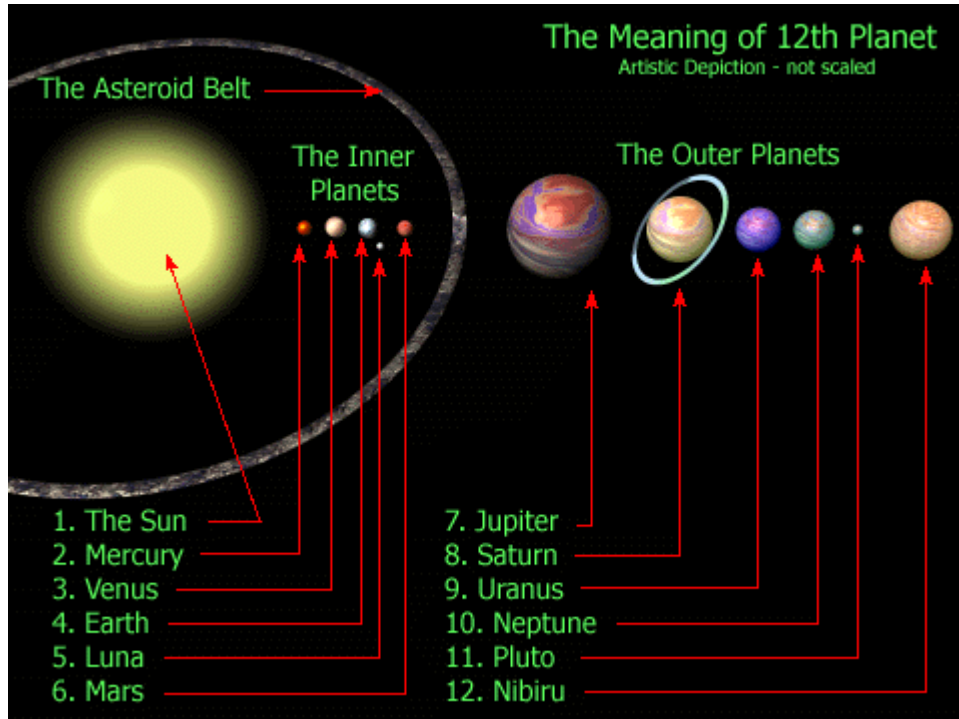


Dogon Gods

The Nibiruans supposedly landed on Earth, colonized it, mining the Earth for gold and other minerals, establishing a spaceport in what today is the Iraq-Iran area - the Cradle of Civilization - and lived in a kind of idealistic society as a small colony. They genetically interfered in our indigenous DNA to create a slave-race to work their mines, farms, and other enterprises in Sumer.

They supposedly created Man, Homo Sapiens, through genetic manipulation with themselves and ape man Homo Erectus. The Great Flood supposedly was an attempt to destroy the slave races of humanity by the Nibirians because they had rebelled against their Nibiruian Gods - Enlil and Enki.

Enlil and Enki were involved in a heated dispute over whether to destroy or preserve the slave races and this power struggle resulted in war.



Every 3,600 years Nibiru is supposed to return for more gold. I do not see this happening. This myth is based on the same Scared - Creational Geometry Grids that is found in all other myths. The patterns - 6, 12, 24, and 36 are here once again. Same old . . . same old!

Did ancient astronauts come to planet Earth to seed a slave race?

Somewhere out there this story is written in the grids that form our reality and can be perceived as real - just as a God named Ra, or one named Zeus, created humanity - as a virtual reality game.

From Zecharia Sitchin's *Earth Chronicles*

Events Before the Deluge

Years Ago:

450,000 on Nibiru, a distant member of our solar system, life faces slow extinction as the planet's atmosphere erodes. Deposed by Anu, the ruler Alalu escapes in a spaceship and finds refuge on Earth. He discovers that Earth has gold that can be used to protect Nibiru's atmosphere.

445,000 Led by Enki, a son of Anu, the Anunnaki land on Earth, establish Eridu -Earth Station I - for extracting gold from the waters of the Persian Gulf.

430,000 Earth's climate mellows. More Anunnaki arrive on Earth, among them Enki's half-sister Ninhursag, Chief Medical Officer.

416,000 As gold production falters, Anu arrives on Earth with Enlil, the heir apparent. It is decided to obtain the vital gold by mining it in southern Africa. Drawing lots, Enlil wins command of Earth Mission; Enki is relegated to Africa. On departing Earth, Anu is challenged by Alalu's grandson.

400,000 Seven functional settlements in southern Mesopotamia include a Spaceport (Sippar), Mission Control Center (Nippur), a metallurgical center (Shuruppak). The ores arrive by ships from Africa; the refined metal is sent aloft to orbiters manned by Igigi, then transferred to spaceships arriving periodically from Nibiru.

380,000 Gaining the support of the Igigi, Alalu's grandson attempts to seize mastery over Earth. The Enlilites win the War of the Olden Gods.

300,000 The Anunnaki toiling in the gold mines mutiny. Enki and Ninhursag create Primitive Workers through genetic manipulation of Ape woman; they take over the manual chores of the Anunnaki. Enlil raids the mines, brings the Primitive Workers to the Edin in Mesopotamia. Given the ability to procreate, Homo Sapiens begins to multiply.

200,000 Life on Earth regresses during a new glacial period.

100,000 Climate warms again. The Anunnaki (the biblical Nefilim), to Enlil's growing annoyance marry the daughters of Man.

75,000 The "accusation of Earth" - a new Ice Age-begins. Regressive types of Man roam the Earth . Cro-Magnon man survives.

49,000 Enki and Ninhursag elevate humans of Anunnaki parentage to rule in Shuruppak. Enlil, enraged, plots Mankind's demise.

13,000 Realizing that the passage of Nibiru in Earth's proximity will trigger an immense tidal wave, Enlil makes the Anunnaki swear to keep the impending calamity a secret from Mankind.

Events After the Deluge

B.C.

11,000 Enki breaks the oath, instructs Ziusudra/Noah to build a submersible ship. The Deluge sweeps over the Earth; the Anunnaki witness the total destruction from their orbiting spacecraft.

Enlil agrees to grant the remnants of Mankind implements and seeds; agriculture begins in the highlands. Enki domesticates animals.

10,500 The descendants of Noah are allotted three regions. Ninurta, Enlil's foremost son, dams the mountains and drains the rivers to make Mesopotamia habitable; Enki reclaims the Nile valley. The Sinai peninsula is retained by the Anunnaki for a post-Diluvial spaceport; a control center is established on Mount Moriah (the future Jerusalem).

9780 Ra/Marduk, Enki's firstborn son, divides dominion over Egypt between Osiris and Seth.

9330 Seth seizes and dismembers Osiris, assumes sole rule over the Nile Valley.

8970 Horus avenges his father Osiris by launching the First Pyramid War. Seth escapes to Asia, seizes the Sinai peninsula and Canaan.

8670 Opposed to the resulting control of all the space facilities by Enki's descendants, the Enlilites launch the Second Pyramid War. The victorious Ninurta empties the Great Pyramid of its equipment.

Ninhursag, half-sister of Enki and Enlil, convenes peace conference. The division of Earth is reaffirmed. Rule over Egypt transferred from the Ra/Marduk dynasty to that of Thoth. Heliopolis built as a substitute Beacon City.

8500 The Anunnaki establish outposts at the gateway to the space facilities; Jericho is one of them.

7400 As the era of peace continues, the Anunnaki grant Mankind new advances; the Neolithic period begins. Demi-gods rule over Egypt.

3800 Urban civilization begins in Sumer as the Anunnaki reestablish there the Olden Cities, beginning with Eridu and Nippur.

Anu comes to Earth for a pageantful visit. A new city, Uruk (Erech), is built in his honor; he makes its temple the abode of his beloved granddaughter Inanna/Ishtar.

Kingship on Earth

3760 Mankind granted kingship. Kish is first capital under the aegis of Ninurta. The alendar begun at Nippur. Civilization blossoms out in Sumer (the First Region).

3450 Primacy in Sumer transferred to Nannar/Sin. Marduk proclaims Babylon "Gateway of the Gods." The "Tower of Babel" incident. The Anunnaki confuse Mankind's languages.

His coup frustrated, Marduk/Ra returns to Egypt, deposes Thoth, seizes his younger brother Dumuzi who had betrothed Inanna. Dumuzi accidentally killed; Marduk imprisoned alive in the Great Pyramid. Freed through an emergency shaft, he goes into exile.

3100 350 years of chaos end with installation of first Egyptian Pharaoh in Memphis. Civilization comes to the Second Region.

2900 Kingship in Sumer transferred to Erech. Inanna given dominion over the Third Region; the Indus Valley Civilization begins.

2650 Sumer's royal capital shifts about. Kingship deteriorates. Enlil loses patience with the unruly human multitudes.

2371 Inanna falls in love with Sharru-Kin (Sargon). He establishes new capital city. Agade (Akkad). Akkadian empire launched.

2316 Aiming to rule the four regions, Sargon removes sacred soil from Babylon. The Marduk-Inanna conflict flares up again. It ends when Nergal, Marduk's brother, journeys from south Africa to Babylon and persuades Marduk to leave Mesopotamia.

2291 Naram-Sin ascends the throne of Akkad. Directed by the warlike Inanna, he penetrates the Sinai peninsula, invades Egypt.

2255 Inanna usurps the power in Mesopotamia; Naram-Sin defies Nippur. The Great Anunnaki obliterate Agade. Inanna escapes. Sumer and Akkad occupied by foreign troops loyal to Enlil and Ninurta.

2220 Sumerian civilization rises to new heights under enlightened rulers of Lagash. Thoth helps its king Gudea build a ziggurat-temple for Ninurta.

2193 Terah, Abraham's father, born in Nippur into a priestly-royal family.

2180 Egypt divided; followers of Ra/Marduk retain the south; Pharaohs opposed to him gain the throne of lower Egypt.

2130 As Enlil and Ninurta are increasingly away, central authority also deteriorates in Mesopotamia. Inanna's attempts to regain the kingship for Erech does not last.

The Fateful Century

B.C 2123 Abraham born in Nippur.

2113 Enlil entrusts the Lands of Shem to Nannar; Ur declared capital of new empire. Ur-Nammu ascends throne, is named Protector of Nippur. A Nippurian priest-Terah, Abraham's father - comes to Ur to liaison with its royal court.

2096 Ur-Nammu dies in battle. The people consider his untimely death a betrayal by Anu and Enlil. Terah departs with his family for Harran.

2095 Shulgi ascends the throne of Ur, strengthens imperial ties. As empire thrives, Shulgi falls under charms of Inanna, becomes her lover. Grants Larsa to Elamites in exchange for serving as his Foreign Legion.

2080 Theban princes loyal to Ra/Marduk press northward under Mentuhotep I. Nabu, Marduk's son, gains adherents for his father in Western Asia.

2055 On Nannar's orders, Shulgi sends Elamite troops to suppress unrest in Canaanite cities. Elamites reach the gateway to the Sinai peninsula and its Spaceport.

2048 Shulgi dies. Marduk moves to the Land of the Hittites. Abraham ordered to southern Canaan with an elite corps of cavalymen.

2047 Amar-Sin (the biblical Amraphel) becomes king of Ur. Abraham goes to Egypt, stays five years, then returns with more troops.

2041 Guided by Inanna, Amar-Sin forms a coalition of Kings of the East, launches military expedition to Canaan and the Sinai. Its leader is the Elamite Khedor-la'omer. Abraham blocks the advance at the gateway to the Spaceport.

2038 Shu-Sin replaces Amar-Sin on throne of Ur as the empire disintegrates.

2029 Ibbi-Sin replaces Shu-Sin. The western provinces increasingly to Marduk.

2024 Leading his followers, Marduk marches on Sumer, enthrones himself in Babylon. Fighting spreads to central Mesopotamia. Nippur's Holy of Holies is defiled. Enlil demands punishment for Marduk and Nabu; Enki opposes, but his son Nergal sides with Enlil.

As Nabu marshals his Canaanite followers to capture the Spaceport, the Great Anunnaki approve of the use of nuclear weapons. Nergal and Ninurta destroy the Spaceport and the errant Canaanite cities.

2023 The winds carry the radioactive cloud to Sumer. People die a terrible death, animals perish, the water is poisoned, the soil becomes barren. Sumer and its great civilization lie prostrate. Its legacy passes to Abraham's seed as he begets -at age 100- a legitimate heir: Isaac.

Cultures who worshiped Amphibian Deities - Anunnaki

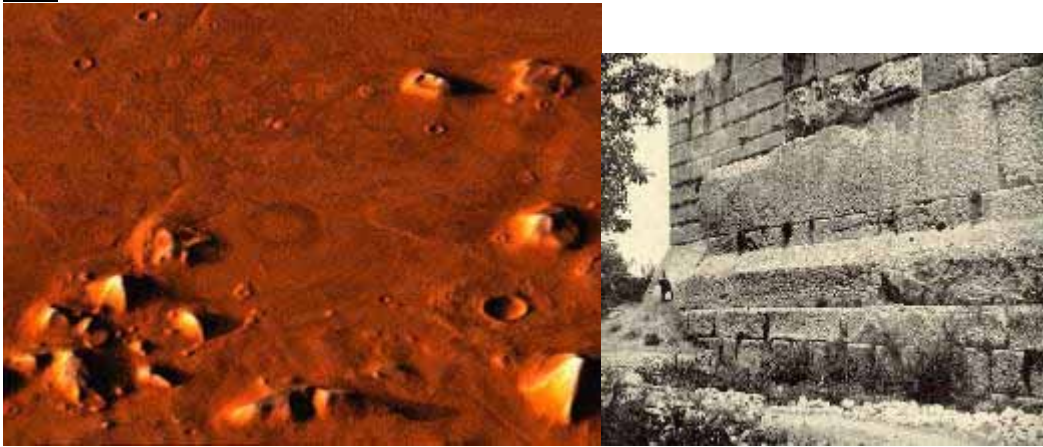
'The Repulsive Ones' -the fish-men who the Babylonians said brought them civilization. The first and most famous was called OANNES or OE, who was thought to have come from a 'great egg'.

'Enki' or 'Ea'-in Sumer where kingship first descended from heaven. EA was thought to live in the 'Apsu' or submarine palace.

'Dagon' and 'Atargis' -the Phillistines worshiped these two amphibian deities who were represented by the tails of fish and human bodies.

'Proteus' - known as the 'old man in the sea'. He could change his shape and see the future. He used to rest in caves to shelter himself from the heat of the star Sirius.

Mars



The City at Cydonia on Mars and surrounding structures appear to be the Anunnaki trans-shipment base spoken of in the ancient Sumerian texts. The Anunnaki sent the gold which they needed to fix their home planet's atmosphere from Earth to Mars to await the reapproach of Nibiru on its 3600 year elliptical orbit. Thus, these structures will likely be found to have been constructed circa 250,000 B.C., depending on how soon after gold shipments began that the Anunnaki decided to utilize the base. Planet Earth is set up with the same geometry as Mars. The alignment of Great Pyramid, Sphinx, and other major grid points overlap in exact degree. This is because they are all created by the same program.

Did ancient astronauts come here from Mars - from the Mars program?

Most of what is presented here is a metaphor for the sacred geometry - as with all mythology, the Bible, the Keys of Enoch, the layouts of our governments and societies, and the programs in the grids.

Baalbek

This massive three million square foot stone platform contains huge stones, including 'The Trilithons' which each weigh 1200 tons, that's 2.4 million pounds. Much later, the Greeks and Romans built their temples on top of it. Legend has it that the Sun god Helios landed upon the platform with his fire chariot. The site is also described in the ancient flood tale of Gilgamesh.



Stonehenge

Recent evidence dates the site to 8000 B.C. The stones are perfectly constructed for predicting and sighting a wide variety of astronomical alignments including the precession of the equinoxes. There are a total of 60 standing stones and lintels, the classic Anunnaki sexagesimal number which is also embedded in our standard of time (60 seconds X 60 minutes=3600, the number of years in Nibiru's orbit).



Easter Island

Humongous carved stone heads weighing an average of 13.78 tons are arranged all over the island. There are no known written records to explain their purpose or origin. Some of the Moai carved in the quarry are as much as 165 tons. Some suggest that the workers who vandalized the Anunnaki Nazca lines fled to Easter Island and constructed the Maoi with the techniques they learned from the Anunnaki.



The Nazca Lines

The Nazca Lines are spread over the arid plain and some stretch for several kilometers with almost no deviation in the straight line sections. The lines can only be seen from the air which, of course, suggests they may have been designed by an airborne civilization.

The Pyramids of Teotihuacan



For centuries, Teotihuacan was the Mesoamerican region's cultural, religious, political, economic, and social center. The massive temples of the Sun, Moon, citadel, temples, palaces, plazas, and paved streets were said built by a Pre-Mayan civilization. Once again, another incredible site, the builders of which are unidentified before one considers the Anunnaki paradigm.