

Nephilim Skulls¹

THESE FOLLOWING PICTURES ARE OF DEMONS, THE OFFSPRING OF THE FALLEN ANGELS

[Gen 6:1] When men began to multiply on earth and daughters were born to them,

[Gen 6:2] the sons of heaven saw how beautiful the daughters of man were, and so they took for their wives as many of them as they chose.

[Gen 6:3] Then the LORD said: "My spirit shall not remain in man forever, since he is but flesh. His days shall comprise one hundred and twenty years."

[Gen 6:4] At that time the Nephilim appeared on earth (as well as later), after the sons of heaven had intercourse with the daughters of man, who bore them sons. They were the heroes of old, the men of renown.

THESE ARE THE GODS THAT THE FREEMASONS AND ILLUMINATI WORSHIP!!!

THESE SKULLS ARE THE Nephilim IN THE FLESH (BONE). THESE WERE THE KINGS OF ANCIENT EGYPT AND PERU AND ATLANTIS.

SOME OF THESE PICTURES ARE FROM THE GOLD MUSEUM IN LIMA PERU.

Most of the skulls can be found in the Museum in Ica which is on the edge of nazca in Peru.

They were found in a place called Paracas which is on the coastline near the candelabra and the lines. Some were found burried under the lines.

The small bulbus skull can be found in a museum in Mexico in a city called merida. They were brought there from palenque.

There are no elongated skulls in the gold museum. Skulls with gold brain surgery yes.

EVERYTHING ON THE CD HAS BEEN EXHAUSTIVELY RESEARCHED. THIS WEB FILE [THAT IS THE WHOLE SERIES] IS ONLY A SAMPLING. WE NEED TO GET THESE CD'S OUT THERE, NOT FOR THE COST BUT JUST TO INSURE THEY SPREAD.

THIS IS THE SINGULAR REASON THAT EVOLUTION IS TAUGHT IN SCHOOL. THIS PROVES THAT EVOLUTION IS A FLAT OUT LIE. CONSIDER THIS STATEMENT FROM THE SPIES THAT WENT INTO CANAAN TO CHECK OUT THE NEW ISRAEL.

[Num 13:31] But the men who had gone up with him said, "We cannot attack these people; they are too strong for us."

[Num 13:32] So they spread discouraging reports among the Israelites about the land they had scouted, saying, "The land that we explored is a country that **consumes its inhabitants. And all the people we saw there are huge men,**

[Num 13:33] **veritable giants** (the Anakim were a race of giants);

we felt like mere grasshoppers, and so we must have seemed to them."

[Deu 1:28] What shall we meet with up there? **Our kinsmen have made us fainthearted by reporting that the people are stronger and taller than we,** and **their cities are large and fortified to the sky;** besides, they saw the Anakim there.'

THE ROTHCHILDS HAVE A LOCKDOWN ON ALL ARCHEAOLOGICAL SITES, SO NO ONE GETS THE TRUTH ON THE REAL HISTORY.

The-Bible-of-Aryan-Invasions

ANCIENT NUCLEAR WARS-1

ANCIENT NUCLEAR WARS-2

DESTRUCTION OF ATLANTIS

¹ C:\My Documents\SCHOOLofLocalChurch\Lessons\30TheNephilim\Articles\NephilimSkulls01.doc



Ashmolean Museum

WADD PRISM OF "WORLD HISTORY" — A Sumerian prism found at Kish and dated about 2000 B.C. It gives an outline of world history and a list of ten kings who ruled before the Flood. The figures provided for the kings mentioned are beyond imagining: "Alagar ruled 36,000 years. . . . Dumuzi, a shepherd, ruled 36,000 years. . . ." The Biblical parallel of the long-lived Patriarchs seems sober by comparison. (See Gn 5, 1-32)

ATLANTIS
THE LOST EMPIRE

I AM MAKING THE STATEMENT FROM UNDERSTANDING FROM MY GOD THAT THE YEARS GIVEN ABOVE ARE REAL, NOT MIS-UNDERSTOOD OR MIS-TRANSLATED. THEY WENT BY SOLAR / CELESTIAL CALENDER, NOT LUNAR. OTHERS TRY TO DISTRACT YOU WITH THESE LIES. SOLAR CALENDER / CYCLE YEAR IS EQUIVILANT TO 52 LUNAR CYCLE YEARS. METHUSALAH LIVED 969 YEARS. [Gen 5:27]

The whole lifetime of Methuselah was nine hundred and sixty-nine years; then he died.

969 SOLAR YEARS

X 52 LUNAR YEARS

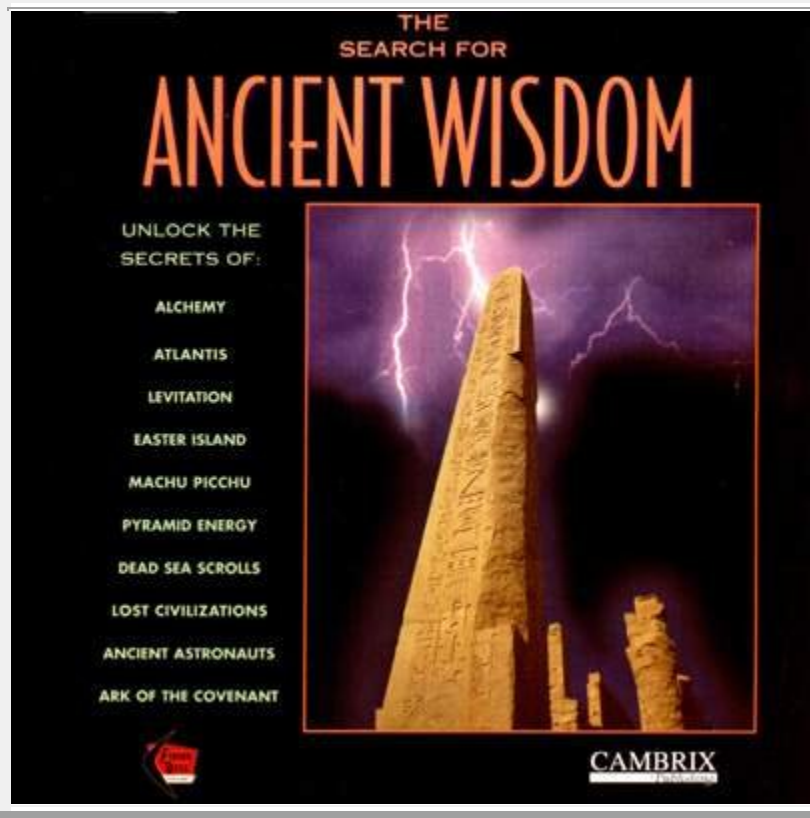
= 50388 HUMAN YEARS

SO YOU SEE, THE YEARS GIVEN ARE EASILY POSSIBLE.

THE PICTURES BELOW AND OTHERS IN OTHER PARTS OF THIS SITE

CAME FROM THIS CD BELOW

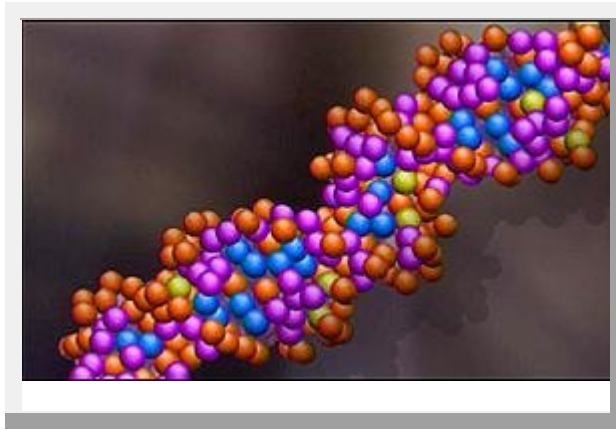
AT THIS LINK. Cambrix Publishing.htm



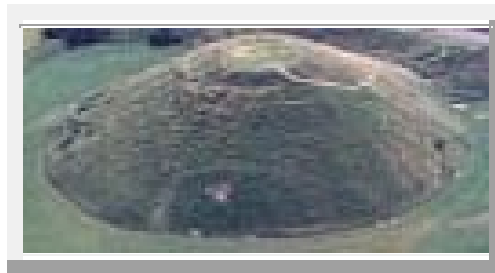
NEW! Tornado in a Junkyard: The Relentless Myth of Darwinism ([more info...](#))

In this engaging page-turner, James Perloff devastates the theory of evolution. Issues tackled include the lack of transitional forms in the fossil record, the lack of evidence for "ape-men," and the amazing history of fraud that has characterized the efforts to get Darwin's theory, which he himself questioned, accepted and taught as fact. Paperback, 321 pages.





Subterranean Tunnels & the Hollow Earth

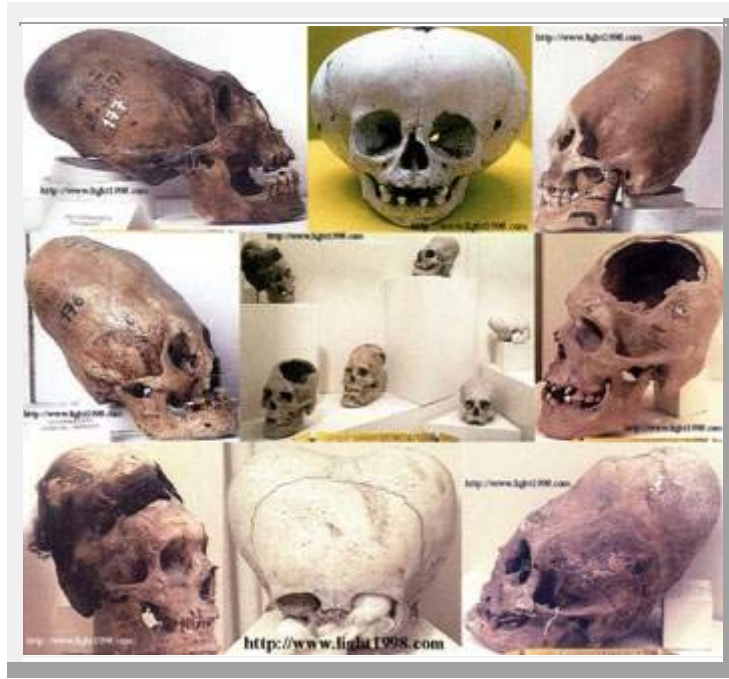


UNFORTUNATELY I HAVE TO PUT THE WEBSITE ON THESE PICTURES BECAUSE THEY ARE BEING COPIED AND USED ELSEWHERE WITH NO WAY TO FIND THE SOURCE--CAMBRIX. SO IF YOU SEE THESE PICS WITH A BLANK SPOT WHERE YOU SAW THE WEBSITE ON THEM, YOU KNOW THE REST.

DEFINITION FOR A-LIEN THE "REAL" BOOK OF ENOCH



THIS PICTURE BELOW FROM WHAT I UNDERSTAND WAS GIVEN TO DAVID ICKE PERSONALLY. YOU CAN CLICK ON THE PICTURES WITH THE RIGHT MOUSE BUTTON AND SAVE IT (SAVE IMAGE AS).



WINRAR.EXE WINRAR.ABC

FUJI.MOV herskull.AIF

[hisskull.AIF](#)

[NAZCA.MOV](#)

[PERUgrave.AIF](#)

[EGYHEAD1.MOV](#)

THESE ARE SKULLS OF 6 DIFFERENT HOMINIDS



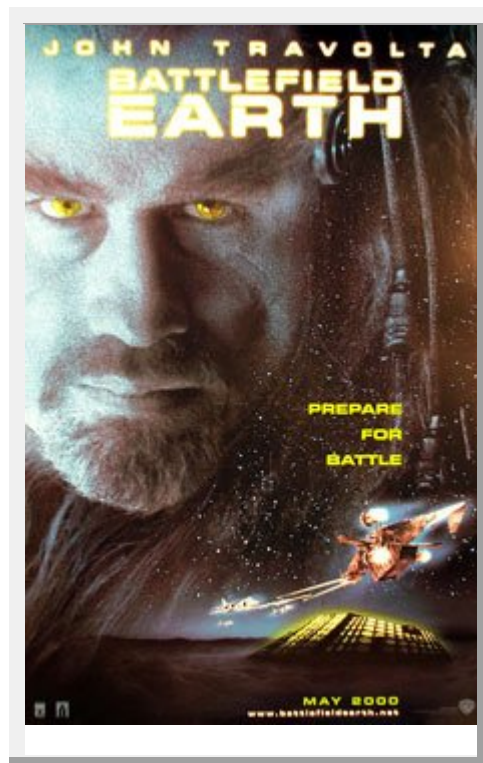
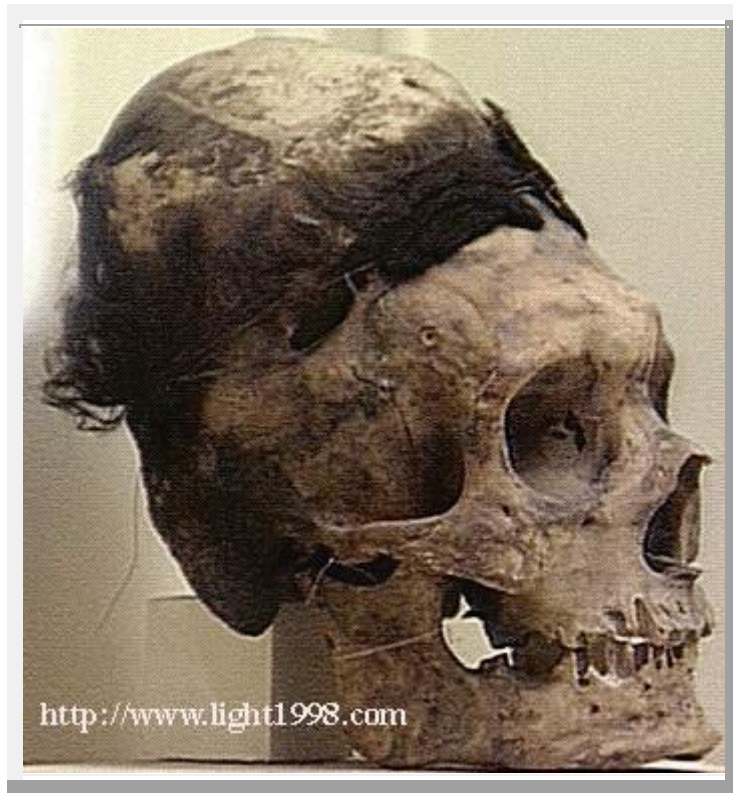




PLEASE NOTE THAT SOME MOVIES [DRACULA-KEENU REEVES] HAVE HAIR STYLES LIKE THE SKULL ABOVE.

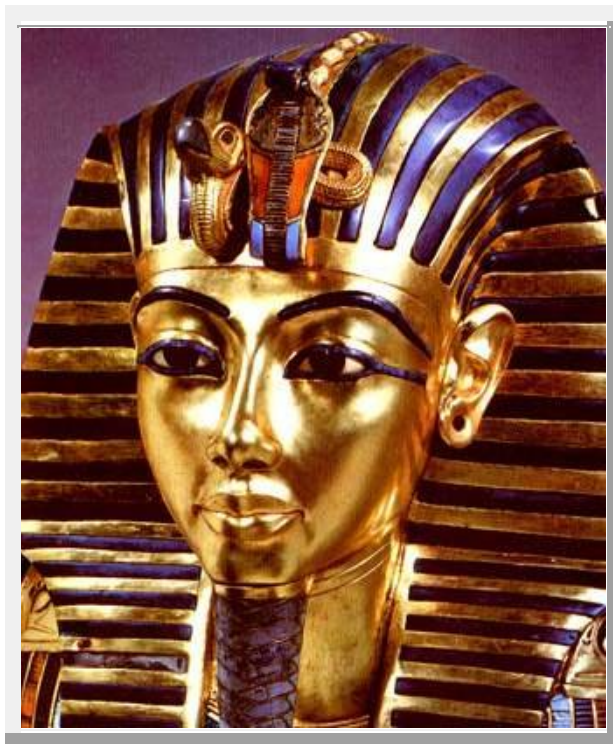


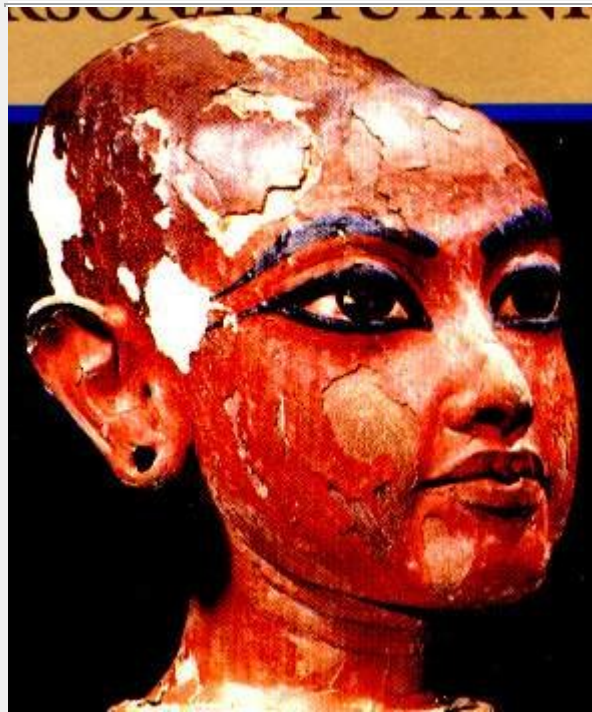






THESE BELOW ARE SHOTS FROM KING TUT'S SKULL. HIS FATHER/FATHER IN LAW WAS AKHENATEN. TO THE BEST OF MY KNOWLEDGE, AKHENATEN WAS THE PHAROAH THAT MOSES WENT UP AGAINST, NOT RAMSES





BELOW IS A GOOD EXAMPLE OF CENSORSHIP. THEY ARE OBVIOUSLY AWARE OF HIS PHYSICAL CHARACTERISTICS, YET LOOK WHAT THEY TELL YOU WHEN COMPARED TO THE PHOTOS.

Portraiture

Outline

Introduction

- Photography Collage
- Characteristics of Portrait
- Assessment of Portraits
- Functions of Portraiture

History of Western Portraiture

Ancient Portraiture

- Caracalla
- Medieval Period
- Renaissance
- Man in a Red Turban
- Baroque and Rococo
- Self-Portrait by Rembr
- Self-Portrait by Kauffr

Neoclassicism, Romantic:

Impressionism and Postim

- The Mirror
- Van Gogh's Self-Portr
- Twentieth-Century and C
- Tête de Femme
- Madame Zborowska

Self-Portraiture

Photographic Portraits

Non-Western Portraiture

African Portraits

Asian Portraits

- Otani Oniji as Eitoku

The Americas

Caracalla



Expand

Caption

History of Western Portraiture

Ancient Portraiture

Caracalla

The first representations of identifiable individuals date from the unification of Upper and Lower Egypt about 3100 bc. During the Old Kingdom (3100?-2258? bc), this type of portraiture flourished, especially in the funerary representations of pharaohs and nobles. Carved from some of the most durable materials known (diorite, slate, and granite), with subjects seated in rigid, staring poses, these portraits convey eternal authority, not the changeability of everyday life. During the New Kingdom (1570-1070 bc), more naturalistic portraits were made, particularly when the pharaoh **Akhenaton**, who ruled from about 1350 to 1334 bc, introduced a new style to Egyptian portraiture. In this new style, depictions of members of the royal family are believed to be based on the subjects' actual appearances. The subjects of these portraits have enlarged foreheads and swollen bellies—curvaceous forms that contrast dramatically with the angular severity of their predecessors. Some scholars feel that the first real portraiture—images depicting the unidealized appearances of specific individuals—dates from this period. *See Also* Egyptian Art and Architecture.

The earliest examples of Greek portrait busts date from the 5th century bc. Although vivid and lifelike, these sculptures, which portrayed determined and handsome youths, were frequently



PLEASE NOTE THE CHILDS SKULL

Tutankhamen

More Information
about This Subject

Death Mask of Tutankhamen

**Death Mask of Tutankhamen**

The death mask of Egyptian pharaoh Tutankhamen is made of gold inlaid with lapis lazuli and carnelian. The mask comes from the innermost mummy case in the pharaoh's tomb and stands 54 cm

Death Mask of Tutankhamen

Timeline: 1343 BC

Tomb Open at Luxor

Discovery of King Tut's Tomb

Tutankhamen (1343-1325 BC), Egyptian pharaoh of the 18th dynasty, the son-in-law of Akhenaton, whom he succeeded. He became pharaoh at about the age of 9 and ruled until his death at about the age of 18. Peace was brought to Egypt during his reign as the worship of Amon, abandoned under Akhenaton, was restored and Thebes, the city sacred to Amon, was again made Egypt's capital. Although he was not an important king, Tutankhamen is well known today because his tomb, containing fabulous treasures, was found virtually intact by the British archaeologists Howard Carter and Lord Carnarvon in 1922.

