

Amazing Discoveries (12/31/2002)



He Was Found Frozen in a Glacier

Two men were hiking in the Alps near the border between Austria and Italy in September 1991, when they came upon a corpse frozen in the ice. The dead man happened to be the oldest frozen mummy ever found – estimated at 5,300 years old! How did he get there? Of what did he die? Scientists said he was wonderfully preserved for someone who died over five millennia ago. The ice glacier that formed over him kept him in a fairly good state of preservation. He was nicknamed Ötzi the Iceman, after the Ötztal area where he was found. Scientists examined his bone density and determined that he was about 40 years old when he died. Upon examining his intestine just beyond his stomach, they found that he had eaten bread, fruit and meat about six hours before his death. Upon finding pollen from the hop hornbeam plant, they even determined the valley south of the mountain where he came from and that he died sometime between March and June. In June 2001, an X-ray revealed

what looked like a foreign object just inside his shoulder – a shadow in the shape and density of a flint stone arrowhead.

At last, the manner of his death was determined. He was attacked in the valley and managed to escape. As he ran he was shot in the back. He pulled the arrow shaft from his back, but could not retrieve the arrowhead. He reached the top of the mountain, but was too exhausted to continue. Weakened from bleeding, he could go no further. He collapsed and died.

How Long Can Frogs Live?



A frog estimated to be over 6,000 years old was freed from its stony prison in 1865, by excavators in Durham, England. The live frog was found in a block of limestone 25 feet underground. Its eyes were reported to be especially bright, its hind claws were longer than normal and its front claws were turned in. It appeared to have difficulty breathing at first. It was reported to make a barking sound through its nostrils. The imprint of the frog was embedded in the stone. There is no scientific explanation of how the frog survived the centuries without food or oxygen, but many such stories have emerged over the years. Some of the animals found embedded in stone lived only a few hours or days after being released from its entombment. The frog appeared to be a prehistoric species, unlike modern frogs. Although frogs are known to hibernate for months at a time in mud, it is hard to imagine one hibernating so long that the mud turned to stone, then sat for unknown periods of time

until split open. An hour and a half after stoking his fire, Mr. W.J. Clarke, of Rugby, England, reached over to poke the coals. As he broke open one coal, he saw something move and snatched it out of the fireplace. It proved to be a living toad and survived for nearly five weeks. It had no mouth and was nearly transparent. Photographs of this marvel were offered for sale by the London Stereoscopic Company in the early 1900s. There is no scientific answer for finding a live 6,000 year old frog. But life is the one mystery that is not of this world.

Woolly Mammoth Found in Siberia

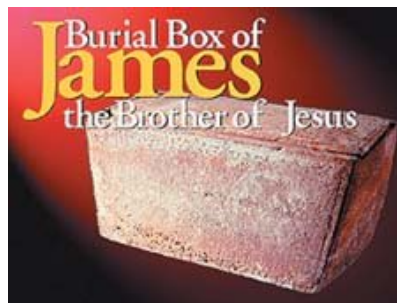


The woolly mammoth, cousin to the elephant, doesn't live today. But when did they become extinct? Whole carcasses have been found frozen in Siberia and Alaska, preserved well enough to eat. There are stories that Russian czars considered the meat a delicacy on their dinner tables. Prospectors in the Yukon were said to roast and eat the meat. According to an article in the *Encyclopedia Britannica*, "Cases have been reported in which sled dogs were fed the meat from frozen mammoth carcasses that had begun to thaw out of the ice that had held them for almost 30,000 years." Preserved remains, such as flesh, hair, internal organs, and stomach contents are enormously valuable to scientists. The frozen remains of a mammoth, recently discovered in Siberia, is so well preserved, scientists are considering cloning the animal. An elephant could be used to produce a live woolly mammoth! Pictures of woolly mammoths are preserved on walls of caves, drawn by early man. But, 30,000 years? I don't think so. Recent carbon-14 tests on a mammoth carcass found on Wrangel Island, off the northeast coast of Siberia, found them to be only 4,100 years old. It appears that most of them died in Noah's Flood.

Amazing Discoveries (12/1/2002)

Burial Box of James - Brother of Jesus

reports the find of a limestone bone bones of James, the brother of Jesus, in a private collection in Israel. its find is unavailable. No one the bones. Andre Lemaire, a leading Jerusalem from April until University's Institute for Advanced While there, he was invited to the inscriptions on several artifacts.



Biblical Archeology Review (Nov., Dec. 2002), box, called an ossuary, which once housed the has been found in Jerusalem. It is one of many now Unfortunately, as with many artifacts, the story of knows just where it was found, or what happened to epigrapher (a specialist in inscriptions) was in September 2002, for studies at the Hebrew Studies. the home of a certain antiquities collector to inspect The unnamed collector mentioned that he had some

objects he wanted Lemaire to see. One of them was the James ossuary. After tests, the bone box was certified as genuine. An ancient Aramaic inscription on the side of the box reads: "James, son of Joseph, brother of Jesus." (Ya'akov bar Yosef akhui diYeshua) In the first century, the personal name of Ya'akov (Jacob) was the root for the English name of "James." Note that Jacob is spelled with a u vav. Throughout the book of Genesis, Jacob was spelled without the u vav. There is only one verse in Leviticus (26:42) and four verses in Jeremiah where Jacob is spelled in the same way that it appears on the ossuary. It is unfortunate that some artifacts are dug up and sold on the antiquities market by private hunters. Whoever found this ossuary, probably dumped the bones out and never bothered to report the location of the tomb in which it was found.

Metallic Vessel Found in 1851



The journal of the Scientific American, June 1851, contained a picture and article about a metallic vessel that had been removed from an "immense mass of rock." It was found on Meeting House Hill in Dorchester, Massachusetts, embedded in solid stone about fifteen feet below the surface. The bell-shaped vessel was 4 ½ inches high, 6 ½ inches across the base, 2 ½ inches across the top, and about an eighth-inch thick. It shows six figures of a flower or bouquet, inlaid with silver and around the lower part of the vessel a vine or wreath also inlaid with silver. The carving and inlaying are obviously the work of an human artisan. But it was found in stone dated at millions of years old. How did it get there? According to Milton Swanson of Maine: "It had been given to Harvard College, but because of its mysterious origin they relegated it to a closet. The building supervisor finally brought it home to Medford, Mass. He sold it to me just before he died in his eighties." The Museum of Fine Arts in Boston put it through several tests over a period of two years, but was unable to determine its age or origin. The "pudding" stone in which it was found is also known as conglomerate, similar to concrete. Since it is obviously not millions of years old, the only logical thought about its origin is that it was buried in the days of Noah's Flood. Such sedimentary rock is native to the area.

The Brain – The Final Frontier



Dr. Ruben Gur, a neuropsychologist at the University of Pennsylvania, says brain scanners could be used in criminal interrogations. Scientists have learned to monitor the brain's activity and expose things a person may be trying to hide. It is the ultimate "lie detector." The discovery could revolutionize police work. A scanner has been developed to take pictures that highlight certain parts of the brain that are activated as the subject looks at a picture and recognizes a familiar face, even if one tries to conceal it. Telltale parts of the brain "light up" when the eye sees a familiar scene, such as a crime scene.

Show the suspect a picture of the crime scene. If he recognizes the victim or the room, certain areas of the brain will light up. It matters not that he may deny it. His brain scan will tell if he is guilty or not. The scanning machine is called a functional MRI and takes pictures that highlight specific parts of the brain activated during certain tasks. At a meeting of scientists on the campus of the University of Pennsylvania, Gur said, "Everything we do, and everything an enemy does, starts in the brain." Such scanning could be used to pick up brain abnormalities that predispose a person to violence. Another scientist, Daniel Langleben, said, "In the long term, I think we will have technologies powerful enough to understand what people are thinking in ways unimaginable now.... I think in 50 years we will have a way to essentially read minds." Sounds like visions of George Orwell's thought police!

Amazing Discoveries (11/1/2002)



Faster than the Speed of Light

According to *NewScientist.com* website, physicists at the Middle Tennessee State University science department have created an inexpensive way to transmit electrical impulses at over four times the speed of light. They used about \$500.00 worth of coaxial cables and equipment purchased from local suppliers. Using alternating pieces of 18 to 24 foot lengths of coaxial cable, Jeremy Munday and Bill Robertson pieced together a transmission line about 360 feet long. They used two different kinds of coaxial cable, each with a different electrical resistance. They hooked their "hybrid" cable up to two signal generators, one of which broadcast a fast wave, the other a slow one. The waves interfere with each other to produce electric pulses, monitored on an oscilloscope.

They explained that any pulse, whether electrical, light or sound, can be imagined as a group of tiny intermingled waves. The energy of this "group pulse" rises and falls over space, with a peak in the middle. The different electrical resistances in the hybrid cable caused the waves in the pulse's rear to reflect off each other, accelerating the pulse's peak forward. They used an oscilloscope to trace the pulse's strength and speed, and confirmed that the signal's peak accelerated through the cable at more than four billion kilometers per hour. Light travels at the speed of 186,000 miles per second, or 300,000 kilometers per second. They managed to accelerate the speed four times. Quite a feat! But don't look for new starships at NASA any time soon.



The Tomb of Alexander the Great

Alexander the Great died in Babylon on June 13, 323 B.C., a result of profligate living, alcoholism and malaria. His body was placed in a golden coffin and carried into Egypt. Ptolemy, one of Alexander's four chief lieutenants, received his body and led the procession to its final burial place, long thought to be Alexandria, the Egyptian city named after him. But a 1995 discovery suggests that he was buried at the oasis of Siwa in western Egypt, where the "oracle of Amun" once told him that he was divine and that he would rule the world. On his deathbed, he told his men that he wished to be buried there. The discovery of a Macedonian style tomb was announced in late January 1995, by a Greek archaeological team that had been working in the area since 1989. They discovered three limestone tablets inscribed in Greek. One tablet, written by Ptolemy, said that he brought his master's body to Siwa, "which was so light," suggesting the corpse was mummified, a process that extracted 50 percent of the body's weight. The second, smaller tablet, was commissioned by the Roman emperor, Trajan (A.D. 98-120). The third stone fragment found at the site is of unknown date and authorship. They are still digging, looking for the corpse.



The Giant Stones of Baalbek

About 60 miles northeast of Beirut, Lebanon, lies the ancient city of Baalbek with its temples built of huge stones, weighing as much as 1,000 tons each. In the fifth century, Baalbek was listed among the "wonders of the world." Three ancient temples are built with blocks of building stones so big, some have speculated they were designed by a race of giants. The Bible refers to the Beqaa Valley as the Valley of the Rephaim, or Valley of the giants: *"And it shall be as when the harvestman gathereth the corn, and reapeth the ears with his arm; and it shall be as he that gathereth ears in the valley of Rephaim"* (Isaiah 17:5).

Some suggest that the term, Baalbek, means "god (Baal) of the Beqaa." Others say it simply means "valley of the Beqaa." In the Selucid (323-64 B.C.) and Roman (64 B.C.-A.D. 312) periods, the town was known as Heliopolis, the "city of the sun." So, who built the temples and how were these huge stones moved into place? According to historical records, a similar 900-ton block was moved with 12 winches manned with 24 men each, or a total of only 264 men. The Romans developed a system of winch movement. Winches were placed on poles along the transport path, two parallel rows with six winches on each side. Each winch had a distance of about 15 feet. When the angle of the back two winches became unusable, they were removed to the front position, etc. The conclusion is that local stonemasons could have moved the stones at Baalbek, rather than giants. The temples, built in Roman times (second and third centuries A.D.) were dedicated to Jupiter, Venus and Bacchus. u

Amazing Discoveries (10/1/2002)



A Wheel Within a Wheel

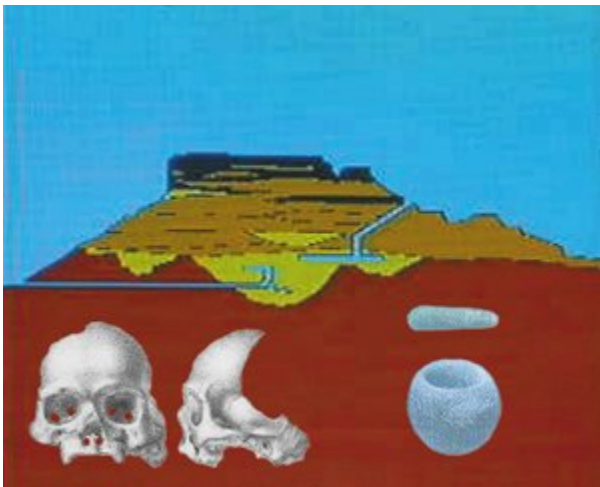
The Hubble Space Telescope recently captured this phenomenal photograph of a ring-shaped galaxy, dubbed "Hoag's Object." A nearly perfect ring of hot, blue stars that pinwheels about the yellow nucleus of this unusual galaxy. The telescope captured a face-on view of the galaxy's ring of stars, revealing more detail than any existing photo of this object. The entire galaxy is about 120,000 light-years wide, slightly larger than our Milky Way. The blue ring, which is dominated by clusters of young, massive stars, contrasts sharply with the yellow nucleus of mostly older stars. What appears to be a "gap" separating the two stellar populations may actually contain some star clusters that are almost too faint to see. Curiously, a tiny "wheel-shaped galaxy," an object that bears an uncanny resemblance to the large "wheel" can be seen in the gap at the one o'clock position. It looks like a wheel within a wheel! The tiny ring-shaped object is probably a background ring galaxy.

The Hubble Space Telescope is a cooperative program of the European Space Agency (ESA) and the National Aeronautics and Space Administration (NASA). It was envisioned in the 1940s, designed and built in the 1970s and 80s, and launched by the crew of the space shuttle *Discovery* on April 25, 1990. Because it is located outside Earth's atmosphere, its optics can see objects in space with 10 times better resolution than any telescope on our planet. Its incredible discoveries can be seen on the Internet.



The Anchor Stones of Noah's Ark

There were twelve stones in all — and all but one had 8 crosses carved on them. They were found by American explorers in 1959, about 20 miles southwest of Mount Ararat in Eastern Turkey, and 14 miles west of the ruins of an ancient city, thought to be Naxuan, the city of Noah. Many smaller, but similar anchor stones have been found off the coast of Lebanon. There is no doubt that these were the anchor stones of a very large ship. The hole at the top of each stone offers a place where large ropes could be attached. The stones are scattered across the countryside in such a way as to suggest that Noah cut each stone away from the Ark as it contacted the ground — lest the Ark be pulled under the surging, yet receding water. It is speculated that the eight crosses on each stone date from the Christian era, either the Byzantine or Crusader periods. The Bible tells of eight people surviving the Flood. There is no doubt that the crosses were carved to commemorate Noah, his sons, and their wives. At the site of the ancient ruins of Naxuan lies the shape of a boat, proclaimed by the Turkish government to be Noah's Ark. It carries the same dimensions as the biblical ship that saved the world. Whether or not you believe Noah's Ark has been found, you can't deny the existence of those marvelous basaltic anchor stones!



Ancient Skull Found in Gold Mine

It was called "The Calaveras skull." In February 1866, a gold miner, Mr. Mattison, the principle owner of a mine on Bald Hill, near Angels Creek, Calif., removed this skull from a layer of gravel 130 feet below the surface. The gravel was near bedrock, underneath several distinct layers of volcanic material at Tuolumne Table Mountain. It was examined by J. D. Whitney, California state geologist and presented in a report to the California Academy of Sciences on July 16, 1866, affirming that it was found in Pliocene strata, estimated to be between 33 and 55-million years old. Whitney reported that miners had found stone tools, stone spoons, handles, spearheads and human bones in the gold-bearing gravels sealed beneath thick layers of a volcanic material called "latite." Whitney said that the skull (pictured above) was remarkably like that of a modern man. On August 2, 1890, a small bowl-like mortar and pestle (shown above) was found in another nearby mine in the same mountain. It was determined that these relics were deposited at the same time the gravel was deposited, and before the lava cap formed. Because the human skull did not fit the evolutionary theory, the find was quickly dismissed as a hoax. William H. Holmes, anthropologist at the Smithsonian Institution,

discredited Whitney's dating saying, "If Professor Whitney had fully appreciated the story of human evolution, he would have hesitated to announce his conclusion." Both men have to be wrong. I suggest the ancient miner died in Noah's Flood.

Amazing Discoveries (9/1/2002)



Iron Pot Found in a Chunk of Coal

The year was 1912. Mr. Frank J. Kennard was shoveling coal into the ovens of the Municipal Electric Plant in Thomas, Oklahoma. He came upon a solid chunk of coal too large to use. So he broke it open with a sledge hammer. As the chunk of coal came apart, an iron pot fell from its center, leaving an impression. Mr. Jim Stull, an employee of the company, watched the breaking of the coal and saw the pot fall out. Tracing the source of the coal, they found that it had come from the Wilburton, Oklahoma, mines. The coal from the Wilburton coal mines is assigned an "evolutionary" date of Mid- Pennsylvanian (295 million years). But the pot appears to be too fine of a design to be so primitive. How the pot got there is anybody's guess. But, one thing is certain: the pot was deposited far below ground before the coal was formed. Coal comes from vegetation being trapped underground during some catastrophic upheaval. Of course, the only historic record of such upheaval, during man's sojourn on this earth, is recorded in the book of Genesis. Is it possible that the pot dates back to an antediluvian era? Was the pot deposited there during Noah's Flood? There is ample evidence throughout the world that such a worldwide cataclysm actually occurred. Marine fossils are found in rock strata thousands of feet below ground as well as on the soaring heights of mountain ranges. It is possible that humans lived in Oklahoma 4,500 years ago!



Giant Footprint Found Near Dinosaur Tracks

The footprint in the photo above is an actual impression in Cretaceous limestone, not a plaster cast. It was chisled from a layer of limestone at the Cross Branch tributary of the Paluxy River, about three miles south of Glen Rose, Texas. This particular layer of Cretaceous limestone is famous for its dinosaur footprints found along the Paluxy River, and dated at 110 million years old.

The human footprint has been the source of controversy because humans were not supposed to live contemporary with dinosaurs. Evolutionists say it had to be carved, not the evidence of an ancient human, because it is "too perfect."

However, Dr. Carl Baugh, director of the Creation Evidence Museum in Glen Rose, had the stone cut across the heel and toes with a large diamond saw (see marks of the slices above), and proved that the stone, then mud, shows strata inside the rock actually curves with the impression. The footprint is large (13 1/4"), but not outside the range of modern man. The foot of basketball great Shaquille O'neal is slightly larger. O'neal wears a shoe size 23EEEE, whereas the man who made this ancient footprint would have only worn a 22EEEE shoe. Though this footprint, made by a runner, looks very wide — it is absolutely normal for one who never wore shoes. So why was the ancient human running? To get out of the rain! He and his contemporary dinosaurs were leaving tracks in the same mud — only 4,500 years ago!

The marvelous story of "**The Burdick Track**" can be read at www.bible.ca/tracks/burdick-track.htm.



The Rosetta Stone Led to Translating Egyptian Hieroglyphs

Ancient Egyptian pictorial writing, known as hieroglyphs, held their secrets for over 1,400 years.

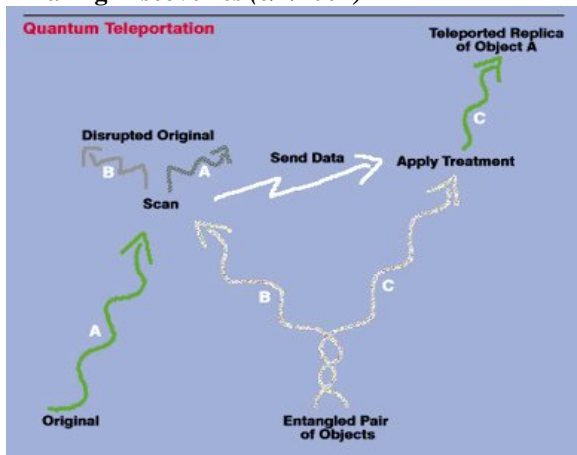
Believed to be lost since the fourth century A.D., no one knew how to read them — until Napoleon invaded Egypt. In 1799, one of his soldiers found a black-basalt stone slab while working at a fort on the Rosetta Branch of the Nile River.

The stone contained carved inscriptions in three languages: Ancient Egyptian hieroglyphs at the top; Egyptian demotic (developed in the sixth century B.C.) in the middle; and Greek (the known language that held the key to understanding the other two scripts) at the bottom. The Greek translation revealed that the inscription was a royal edict issued on March 27, 196 B.C., by the 13-year-old pharaoh, Ptolemy V Epiphanes, at his coronation. It recorded certain benefits that he conferred to Egypt.

Copies of the inscriptions were distributed to linguistic experts in Europe, but the Frenchman, Jean-Francois Champollion made the final breakthrough, and published his results in 1822. He unlocked the mystery of Egyptian hieroglyphs.

Today, all those pictures on ancient Egyptian monuments can be deciphered. The Rosetta Stone offered the key to archeology — our window into the past.

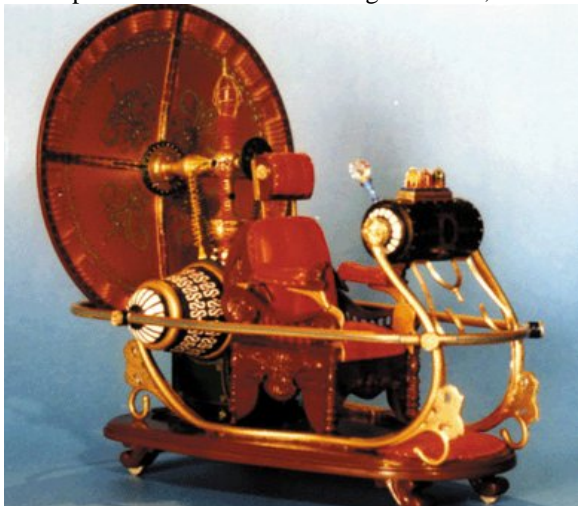
Amazing Discoveries (8/1/2002)



Beam Me Up, Scotty!

A team of scientists at the Australian National University in Canberra, have managed to “teleport” a stream of electronic data from one laser beam to another a few feet away! The Australian team used a process called “quantum entanglement.” They created two entangled laser beams of light. One beam was encoded with radio data and sent over an optical fiber link, while the other laser beam was sent in another direction across the lab. At the far end of the optical fiber, the laser beam was destroyed, while the other beam was monitored to read the values of its entangled photons. Just as the data was destroyed, it showed up in the other beam! It had been teleported from one beam to the other. Eureka! It worked! In 1998, a team in California teleported a single photon (or particle of light) using subatomic physics. They generated two photons at the same point (the process of “entanglement” or “spin”) and sent them in different directions. But the Australian team is the first to achieve a 100% success rate, howbeit, they only teleported a stream of data. Dr. Ping Koy Lam of the Australian National University in Canberra, believes the day will soon come when an atom can be teleported as well. After that, teleporting an object – or even a person – would only be a matter of building

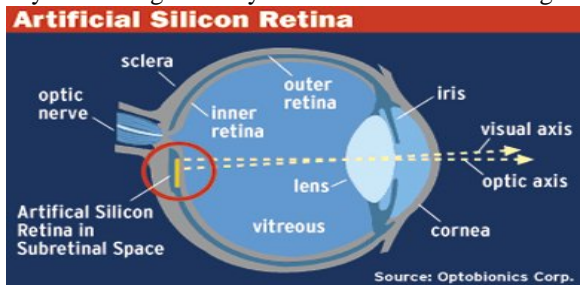
the equipment large enough to teleport billions of atoms all together at once ... and creating the copy correctly. Will the rapture be a mass teleportation adventure? Among scientists, it's not fiction anymore, folks!



He's Building a Time Machine!

Dr. Ronald Mallett says his machine could transport anything from an atom to a person. The University of Connecticut professor hopes to have a working model and start experiments this autumn. He told the *Boston Globe* that he's basing his work on Einstein's theory of relativity. He says the project is serious and added: "I'm not a nut." He told the paper: "I would think I was a crackpot, too, if there weren't other colleagues I knew who were working on it." This isn't Ron Mallett's theory of matter – it's Einstein's theory of relativity. "I'm not pulling things out of the known laws of physics."

The professor and his colleagues plan to build a machine to test whether it's possible to transport a subatomic particle through time using a ring of light. He hopes the energy from a rotating laser beam may warp the space inside the ring of the light, so gravity forces the neutron to rotate sideways. With more energy, he thinks it's possible a second neutron would appear. This second particle would be the first one visiting itself from the future. He admits sending a human through time may need more energy than scientists know how to harness currently, but he sees it as just "an engineering problem." Professor Mallett's boss, Dr. William Stwalley, chairman of the university's physics department, said: "His ideas certainly have merit. I think some of his ideas are very interesting and they would make nice tests of general relativity."



Bionic Eye Lets the Blind See

It's a miniature, hair-thin vision chip, just 2 millimeters across, containing 3,500 microphoto-diodes. It has been implanted in the retina at the back of the eye – in six blind patients – and all claim they can see! The experiments were conducted by Dr. Alan Chow, a 48-year-old ophthalmologist, and president of Optobionics in Wheaton, Illinois. The chip becomes an artificial retina, implanted at the back of the eyeball. It picks up light waves, converting them to electrical impulses and transmitting them to the brain through the optic nerve. So far, after 21 months, there are no signs of infection or rejection in the patients. One patient, a 59-year-old man, saw his own face in the mirror for the first time in 20 years. Another man, who was so nearly blind that he could read no letters at all on the standard eye chart, can now read up to 24 letters. The microchip does not restore perfect vision, but could improve a patient's quality of life. A blind person with the chip could at least know when it is daytime, and possibly recognize friends and family. All of the patients suffer from a hereditary disease called "retinitis pigmentosa" (RP). The rods and cones that receive and convert light across the back of the eye have deteriorated, leading to blindness or near blindness, but the optic nerve is still good. The small microscopic chip embedded at the back of the eye receives light, converts it to electrical impulses in much the same way as the rods and cones. Marvels of marvels! What a joy to give hope that the blind can be made to see!

Amazing Discoveries (7/1/2002)



Discovered: The Tomb of Caiaphas

In 1990, a road construction crew was working on the road that runs through the Gehenna Valley, along the south side of the old walled city of Jerusalem, when they accidentally broke into an ancient burial cave. They immediately called for Israel's Department of Antiquities to send an archeologist to inspect their find.

Upon exploring the burial chambers, they found twelve stone boxes (ossuaries) full of bones! They were decorated with various floral designs and rosettes that clearly dated them back to the first century. To their surprise and delight, they recognized the name on one ossuary. It read "Joseph, son of Caiaphas!" Furthermore, the bones were estimated to be that of a man around 60 years old. The first-century Jewish historian, Flavius Josephus, wrote about the man whose bones were identified as Joseph, son of Caiaphas, calling him the high priest: "Joseph, who was called Caiaphas of the high priesthood."

He filled the office of high priest (A.D. 18-36) during the ministry of Jesus and was the very man who plotted the betrayal and execution of our Savior. It was Caiaphas who once said, "... *it is expedient for us, that one man should die for the people, and that the whole nation perish not*" (John 11:50). Caiaphas was the man who presided over the Sanhedrin court at the trial of Jesus, then turned Him over to the Romans. To this day, Caiaphas is still dead, but Jesus is alive!



Shroud of Turin Reveals X-Ray

Dr. Alan Whanger of Duke University has made a startling discovery about the Shroud of Turin, the burial shroud of a crucified man believed to be that of Jesus. The image of the face shows, not only the features of the exterior skin, hair, and wounding on the face, but shows incredible details of the bone structure as well. In short, the image includes an x-ray of the skull, complete with eye sockets, sinus and nasal cavities and teeth – showing even the roots of the teeth above the gum lines. The features of the hands actually contain an x-ray of the bones, not only in the fingers, but in the palms as well. Dr. Whanger

concluded that the images on the cloth had to be produced by some kind of internal radiation from within the body. The obvious explanation is that the resurrection power was a burst of glory that began within the body and radiated outward to the cloth. The light scorched the features on the cloth at the instant of regeneration. Had the resurrection taken longer than a split second, the shroud could have vaporized. The only logical conclusion at this point is the Shekinah or primeval light from a higher dimension entered this earthly realm and imparted life back into the dead flesh and bones – the body that had been drained of its blood. The shroud caught the moment and photographically recorded the evidence of the resurrection.



Ancient Hammer Embedded in Stone

In June 1934, near London, Texas, in Kimball county, Mr. Max Hahn noticed a rock sitting loose on a ledge beside a waterfall. It had a piece of wood protruding from it. Out of curiosity, he and other family members cracked it open with a hammer and chisel. Inside, to his amazement, he found a strange looking prehistoric iron hammer at the other end of that piece of wood, which turned out to be the handle – all of it embedded inside the rock! In order to verify that the hammer was metallic, they cut into one of the beveled sides with a file. To this day, the bright, shiny mark in the ancient iron has never rusted. In fact, none of the metal shows rust. However, parts of the wooden handle have turned to coal! The iron hammerhead is approximately six inches long with a diameter of about one inch. The handle had long ago broken off at the place where it protruded out of the rock.

Just how old is the hammer? Scientific theory dates the rock at millions of years old. Either the human race has been around a lot longer than even the evolutionists suggest, or the rock formation in that part of Texas is not that old. There is historic evidence for flooding in that part of Texas, however. In fact, the whole world was involved in that flood, documented in history’s most reliable book, the Bible. Since the rock is made of sedimentary material, I opt for a date around the time of Noah’s Flood.

Amazing Discoveries (6/1/2002)



Found: Site Where the Ark Once Stood

While on a plane crossing the Atlantic, Israeli Archeologist Leen Ritmeyer was looking over a picture of the *es-Sakhra*, the huge rock formation that lay in the center of the Mosque of Omar. The Dome of the Rock had housed the *es-Sakhra* since its construction in A.D. 691. But the history of the rock goes back to an ancient threshing floor bought by David for the site of Solomon’s Temple. As Ritmeyer studied the photograph of the rock, he noticed that directly in the center of the rock formation, there lay a rectangular depression measuring 4 feet 4 inches by 2 feet 7 inches – the exact dimensions (1.5 by 2.5 cubits) of the Ark of the Covenant (Exodus 25:10)! He had discovered the ancient site of the Holy of holies and the very spot where the Ark of the Covenant once stood. I Kings 8:21 says that Solomon “*set*” a place for the Ark: “*And I have set there a place for the ark, wherein is the covenant of the LORD, which he made with our fathers, when he brought them out of the land of Egypt.*” The Hebrew verb *siim* for “*set*” can also mean “*make*.” In light of this depression on *es-Sakhra*, it appears that Solomon did indeed “*make*” a place for the Ark of the Covenant. And today, the place where the Ark once stood can be seen directly under the Dome, on the Rock!



Red Heifer Gives Birth to a Lamb

It happened at Passover shortly before the Romans destroyed Jerusalem in A.D. 70. The first-century historian Flavius Josephus claimed that this unusual story was absolutely true. He wrote: “A heifer, as she was led by the high priest to be sacrificed, brought forth a lamb in the midst of the Temple ... I suppose the account of it would seem to be a fable, were it not related by those that saw it” (*Wars of the Jews*, Book VI, Chapter V, Paragraph 3). This is one of the most unusual events in the annals of Jewish history. First, it was what one might call a “virgin birth.” The priesthood was in charge of examining the red heifer for three years to be sure she was perfect. Second, such a birth is a biological impossibility. A cow can only give birth to a calf – not a lamb! Yet, this miracle took place in the Temple compound just before the heifer was to be taken out to the Mount of Olives for sacrifice.

I have long believed that the red heifer is a type of Israel. God’s punishment of the Chosen People corresponds with the sacrifice of the heifer. Israel has been called the “wife of Jehovah,” but as such, has never borne spiritual fruit. One does not find Jews out winning souls. There are no Jewish radio or television programs preaching a gospel of repentance for Gentiles. They send no missionaries. Israel has borne no fruit – except one – the Lamb of God!



Ancient Blue Dye Rediscovered in Israel

Some three thousand five hundred years ago, Moses gave instructions for the making of “*tekhelet*” (blue dye) that was to be used in the veil that covered the Holy of holies and in the ribbons along the edges of the *tallit* – the Jewish prayer shawl. Extracting blue and purple dyes from a snail that grew in the Mediterranean became an important industry for centuries. However, with the Islamic invasion of the Holy Land in the seventh century, the industry disappeared. For the past 14 centuries the formula has evaded Jewish scholars. Thus, until recently, Jewish prayer shawls have sported black ribbons. However, in 1984, Irving Ziderman, a biochemist at the Israel Fiber Institute in Jerusalem, was able to identify the source of the ancient dye. After years of research, trial and error, he perfected the process, using the mucus of the “banded dye murex,” a spiny shellfish once thought to be extinct. The *Talmud* (*Menahot* 44a) says that once every 70 years the shores of the land of Israel are visited by the segulit snail from which the *tekhelet*, used to mark certain religious items, was made.

The Jerusalem Post (November 10,1990) reported that these snails had begun to surface by the thousands along the Mediterranean coast. Some Orthodox Jews believe the reappearance of the snails are a sign of the approaching of the Messianic Age. Today, you can find Jews praying at the Western Wall, wearing prayer shawls with beautiful blue ribbons.

Amazing Discoveries (5/1/2002)



The Giants of Ohio

The serpent mound of Adams County, Ohio, contained the bones of giants over eight feet tall in the early 1800s. Thousands of years ago, the Ohio Valley was inhabited by a race of giants. In 1846, Joseph Henry, first secretary of the Smithsonian Institution, estimated that in Ohio alone, there were over 10,000 burial mounds. Unfortunately, the early pioneers destroyed most of them. But at least one burial mound has been reconstructed in Adams County, Ohio. It stretches across the meadow in the form of a serpent – perhaps identifying the god of this ancient race of giants. In the nineteenth century, several published accounts of excavations verified that many of the giants were over eight feet and some nine feet tall and each had a double row of teeth (www.greatserpentmound.org). In 1883, an article appeared in the journal, *Scientific American*, in which a reporter asked an aged Indian what his people knew of these ancient graveyards. He answered: “Me know nothing about them. They were here before the red man.” In 1872, the *Historical Collections of Noble County Ohio* (p. 350,351), a mound was uncovered, in which were found “the remains of three skeletons whose size would indicate they measured in life at least eight feet in height. The remarkable feature of these remains was they had double teeth in front as well as in back of mouth and in both upper and lower jaws. Upon exposure to the atmosphere the skeletons crumbled back to mother earth.” The accounts of “giants” in the Bible were not figments of man’s imagination. They actually existed, not only in the Middle East, but all over the world!



The Stone Tablets of Ebla

In the early 1960s a Syrian farmer accidentally ran his plow against a large, stone object that proved to be part of the ancient city of Ebla – dating back some 4,000 years. Ebla is located about 40 miles north of Hamath, Lebanon, and a few miles inland from the coast of the Mediterranean Sea. In 1975, a team of archeologists from Rome University hit the jackpot. They discovered 15,000 clay tablets, written in ancient cuneiform, etched in stone. They tell of a thriving empire, giving over 5,000 geographical names. Among them were Jerusalem, Megiddo, Joppa, Damascus, Sodom and Gomorrah. There were literary texts associated with their deities, many being known in Babylonian literature of a later period, including Enlil, Ishtar, Marduk, and Baal. These ancient tablets contain the oldest vocabulary recorded in history. Some tablets were bilingual dictionaries – giving translations and meanings to the languages of that day. One tablet, containing 27 lines, went something like this: “Once upon a time there was no snake, there was no scorpion, there was no hyena, there was no lion, there was no wild dog, no wolf. There was no fear, no terror. Man had no rival. In those days, the lands Subur and Hamazi, harmony-tongued Sumer, the great land of the degrees of princship, Uri, the land having all that is appropriate. The land Martu, resting in security, the whole universe, the people in unison to Enlil in one tongue...” This reference to speaking in one language, gives credibility to the biblical story of the confusion of tongues at Babel.



The Disappearance of Moses

The first-century historian Flavius Josephus gives an unusual description of the final moments in the life of Moses. In the *Antiquities of the Jews*, he records the account of the disappearance of Moses: “Now as he went thence to the place where he was to vanish out of their sight, they all followed after him weeping; but Moses beckoned with his hand to those that were remote from him, and bade them stay behind in quiet, while he exhorted those that were near to him that they would not render his departure so lamentable. “Whereupon they thought they ought to grant him that favor, to let him depart according as he himself desired; so they restrained themselves, though weeping still towards one another.

“All those who accompanied him were the senate, and Eleazar the high priest, and Joshua their commander. He dismissed the senate; and **as he was going to embrace Eleazar and Joshua, and was still discoursing with them, a cloud stood over him on the sudden, and he disappeared**, although he wrote in the holy books that he died, which was done out of fear, lest they should venture to say that, because of his extraordinary virtue, he went to God.” Moses was walking toward Eleazar and Joshua to embrace them with a final good-bye and was talking with them when he suddenly disappeared before their eyes! As the story goes, a cloud stood over him just before he disappeared. Whatever it was, that Moses was saying, was cut off in the middle of the sentence. It was unexpected. It happened in a moment, in the twinkling of an eye! Wow! What a way to go!

Amazing Discoveries (4/1/2002)



Great Pyramid Survived Noah’s Flood

When Abdullah Al Mamun, son of the Caliph of Baghdad, broke into the Great Pyramid in A.D. 820, he found that the walls and floors were incrustated with ocean salt as much as an inch thick. The casing stones around the outside of the pyramid showed watermarks reaching more than halfway up the sides of the nearly 500 foot-tall monument. Silt sediments 14 feet deep around the base of the pyramid contained many seashells and marine fossils. The Sphinx, located near the Great Pyramid, exhibits a tremendous amount of vertical erosion that could only be caused by rain – lots of rain. But how is this possible in such a desert area? Recorded history shows no evidence of rains heavy enough to leave such an enormous amount of erosion on the Sphinx.

The only conclusion we can draw, is that both the Sphinx and the Great Pyramid were built before the Flood of Noah. Both monuments provide evidence that there was such a flood. But there is another puzzle that needs to be solved. The limestone blocks

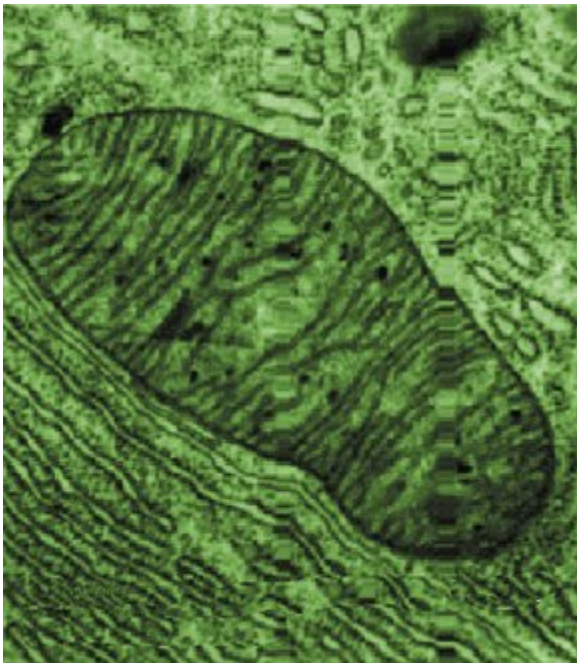
used in building the Great Pyramid also contain fossils and seashells. So, somewhere in the ancient past, there must have been more than one flood. Is it possible that another flood occurred between Genesis 1:1 and Genesis 1:2? Verse 2 reads, “*And the earth was without form, and void; and darkness was upon the face of the deep. And the Spirit of God moved upon the face of the waters.*” Is this the evidence we need for proof of an earlier flood? The Hebrew term for “was” *hayah* can also be translated, “became.” If that is the case, then a gap of some considerable time may exist between verses 1 and 2. Primitive sea life may have been created before the six days of Creation. If not, where did the marine fossils come from that are found in the limestone used in the construction of the Great Pyramid? And where did the salt encrustations, the watermarks on the outside casing stones and the 14 feet of silt around the base of the Great Pyramid come from, if not from Noah’s Flood?



Pharaoh’s Chariots Found on Floor of the Red Sea

Proof of the miracle that God parted the waters of the Red Sea for the children of Israel still lies on the floor of the sea bed to this very day. Recently, Dr. Leonart Möller of Stockholm, Sweden, led a team to the Gulf of Aqaba with an underwater television camera and recorded dozens of chariot wheels – many still attached to axles and hubs. The site of the crossing is eight miles from one shore to the other, and is the only place where an ancient river bed has dumped enough sand into the Gulf of Aqaba to provide a shallow sandy point of crossing – an easy walk for both the young and elderly. Very little coral grows in the area. Just to the north and south of the crossing site, the bottom of the gulf drops off to a steep one thousand feet deep canyon. Almost all of the chariot wheels and axles are encrusted with coral, thus preserving their shapes from 3,400 years ago – long after the wood has decayed away. Only the metal alloys and the coral remains. But at least one chariot wheel, believed to contain silver (a metal to which no coral would attach) still remains on the floor. It was captured on video by the underwater camera.

This excursion to the bottom of the Red Sea is available in the video documentary, *The Exodus Revealed*.

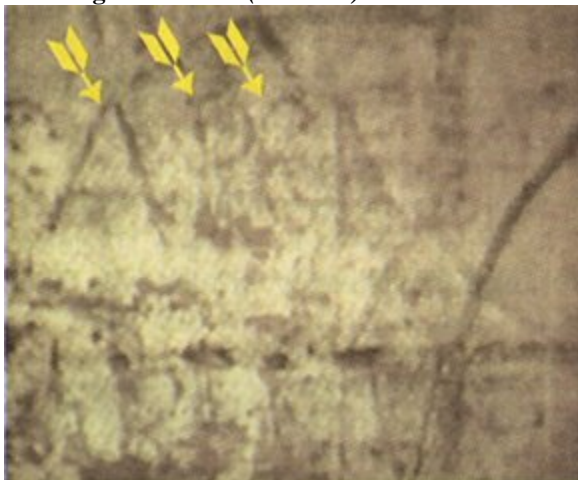


The Search for Eve

Two scientists from Berkeley, Vincent Sarich and Allan Wilson, have discovered that every person on Earth came from the same mother. For lack of a better name, they called her, Eve! Rather than looking for clues to our past in the bones of the Neanderthals of Europe, the Peking man in Asia, or the Java man in Australia, they found the answer right inside the human cell.

With their evidence, it is possible that a lot of so-called “fossil ancestors,” laying around in museums, may not be our ancestors after all. Anthropologists, who have spent decades tracing the connections between the ancient *Homo erectus* and modern humans may have to pack it up and go home. Their research led them to a genetic material in the human cell called “mitochondrial DNA.” These are rod like structures that reside outside the nucleus, and are responsible for supplying the energy that drives the cell’s various activities. DNA inside the nucleus is made up of a combined genetic material from both a mother and a father, and, therefore, changes in every generation. However, Mitochondrial DNA is inherited only from one’s mother and does not change. Their find proves that we all came from the same mother – one original mother – Eve! Everybody knows fossils are fickle; bones will sing any song you want to hear. But Eve is different. Her Mitochondrial DNA makes the history of the human race so simple. And evolutionists are at a loss to refute it.

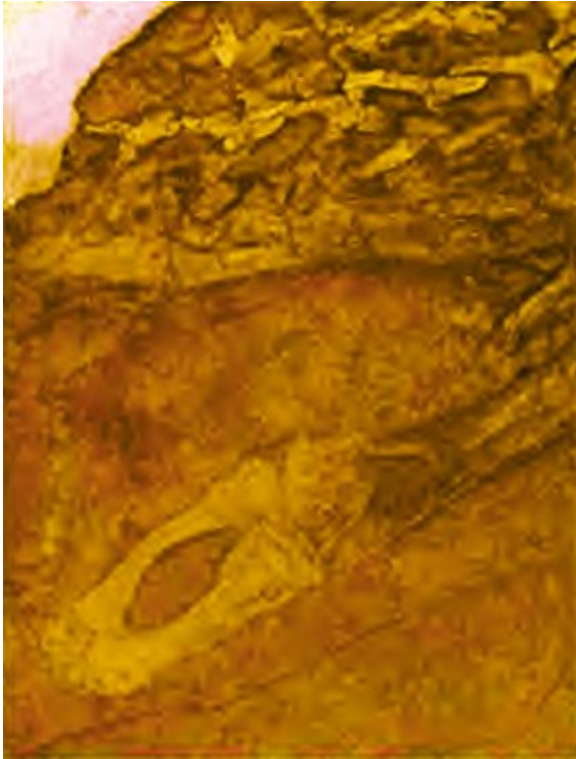
Amazing Discoveries (3/1/2002)



Shroud of Turin Names the Crucified Man

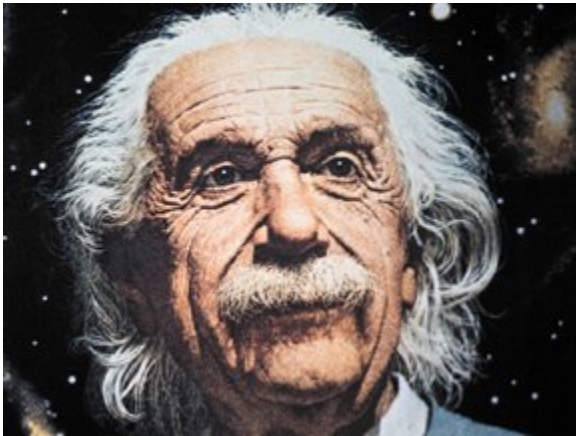
Modern scholars talk about the “man in the shroud” but seem reluctant to take the position that the crucified man is Jesus. But, Dr. Alan Whanger, of Duke University, developing a special technique using polarized lenses to study the shroud, has found the Greek letters for “Nazareth” apparently photographed into the fibers of the cloth! The letters appear to be from the title board that was placed above Jesus’ head on the cross. The Latin term for this board is “titulus.” It seems that the sign was laid beside the left leg of our Savior at burial, and was under the shroud at the time the image was formed on the fibers of the shroud.

Dr. Whanger says, “Helena, mother of Constantine the Great, went to Jerusalem in the early fourth century to search for the Holy places. She reportedly found the tomb with objects in it, including the titulus with the words, ‘Jesus of Nazareth King of the Jews’ in three languages – Hebrew, Greek and Latin. She divided the board, sending one to Constantinople, and taking the other to Rome where it presently resides in the ‘Basilica of the Holy Cross in Jerusalem.’” The wooden fragment is kept in a silver chest. It measures approximately 5.2 inches high by 9.2 inches wide. Its letters are gouged into the wood by some sort of stylus, and then filled with a still-discernible red paint. Amazingly, Dr. Whanger found that its letters match those found on the shroud. Now we know. The “crucified man” has been identified!



Snake Fossils Discovered with Legs

After the fall of Adam and Eve, God cursed the snake saying, “*Because thou hast done this, thou art cursed above all cattle, and above every beast of the field; upon thy belly shalt thou go, and dust shalt thou eat all the days of thy life*” (Gen. 3:14). Such a statement implies that this was not the condition of the snake before the fall. To this day, snakes appear to have small scars on their bodies at the place where legs should have been attached. Until now, tales of snakes with legs were the stuff of legend. However, in 1979, at least two snake fossils were found at the Ein Yabrud quarry 12 miles north of Jerusalem – complete with legs! They were given to the late George Haas of Hebrew University in Jerusalem. At that time, Professor Haas dubbed the fossil, *Pachyrhachil problematicus* – the “problematical legged snake.” Documentation on this amazing discovery appeared in the March 16, 2000, *SMU News*. Another article on the fossil find was published on December 4, 2000, in the *nationalgeographic.com* website. Evolutionists will have a grand time coming up with theories on how and why the snake lost its legs. But we know, don’t we!



Albert Einstein Discovered $E=mc^2$ in the Bible

In 1905, Albert Einstein first published his theories on relativity, from which, eventually, he developed his formula for the atomic bomb. Though not commonly known, Albert Einstein once told a group of rabbis in New York City, that he had done a rabbinical study of *ohr*, the Hebrew word for “light” in Genesis 1:3 and *maohr*, in Genesis 1:14, and arrived at his conclusions about relativity. He noted that the two terms are not alike. The light in v.3 appears to be the Divine source, while the light in v.14 appears to be of a different order. *Maohr* means “from light” – thus emanating from the *ohr*. Rabbis believe the *ohr* to be the primeval light – source of the *shekinah* glory. Einstein took the word for light (*maohr*) and by a complex series of grammatical divisions and substitutions, arrived at the words for:

mass *ma*,
light *ohr*,
speed *mahar*,

raised *rum*, and
squared *rebah*.

This led the Jewish genius to discover that E “energy” could be derived from M “mass” multiplied by the C^2 “square of the constant” (the mathematical “constant” commonly assumed to be the speed of light). Albert Einstein discovered this incredible formula from an ages-old accepted and proven rabbinical method for interpreting the depths of Hebrew as the biblical language. He not only proved that the formula works, but that the original author of the formula placed it in the opening chapter of the Bible.